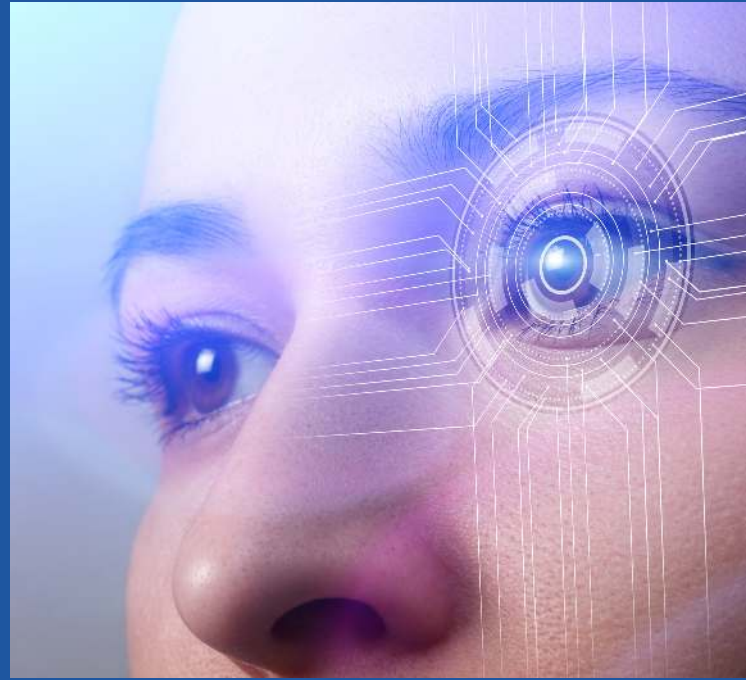


**CONTACTLESS**

# We're introducing Facial Recognition!

This new technology  
is now available for a  
contactless meal  
service!



# Facial Recognition

## CONTACTLESS PAYMENT METHOD

- ✓ Contact free!
- ✓ Quick payments!
- ✓ Faster lunch service!
- ✓ No need to carry a card, enter PIN or touch scanners at the point of sale!
- ✓ Safe and secure!

### Simply select, look & go

With Facial Recognition, pupils simply select their meal, look at the camera and go, making for a faster lunch service whilst removing any contact at the point of sale.

### Easy payments

School meal payments are instantly reflected in the pupil's cashless accounts in the same way as any other identification method.

### Contactless identification method

Pupils no longer need to carry any form of identification such as a card or even enter a PIN.



Safeguards pupils by eliminating touchpoints from our lunchtime service!

## About Biometrics

Biometrics authentication is the automatic recognition of a living being using suitable body characteristics. By measuring an individual's physical features in an authentication inquiry and comparing this data with stored biometric reference data, the identity of a specific user is determined.

There are many different biometric features that can be used for authentication purposes these include finger image, facial recognition, signature, iris, retina, DNA or any other unique characteristic.

Once a characteristic has been chosen the next stage in the Biometric process is authentication.

A biometric feature is saved on to a database. Once the data has been stored, a new scanning of the biometric feature is taken. If the comparison is positive, access to the appropriate application is granted.



Biometrics are not new, their roots have been traced back to ancient Egyptian times. The use of finger images as a security device started with Chinese officials using them to seal documents in the second century BC.

## The history of biometrics

Biometric technology is now being used at many locations around the country including banks, supermarkets and now even schools and colleges are adopting this increasingly popular technology.



Whilst the use of biometric recognition has been steadily growing over the last decade or so, these past couple of years have seen an explosion in development, interest and vendor involvement, particularly in mobile devices where they are commonly used to verify the owner of the device before unlocking or making purchases.

We are delighted to offer this fast and secure identification technology to purchase our delicious and nutritious school meals