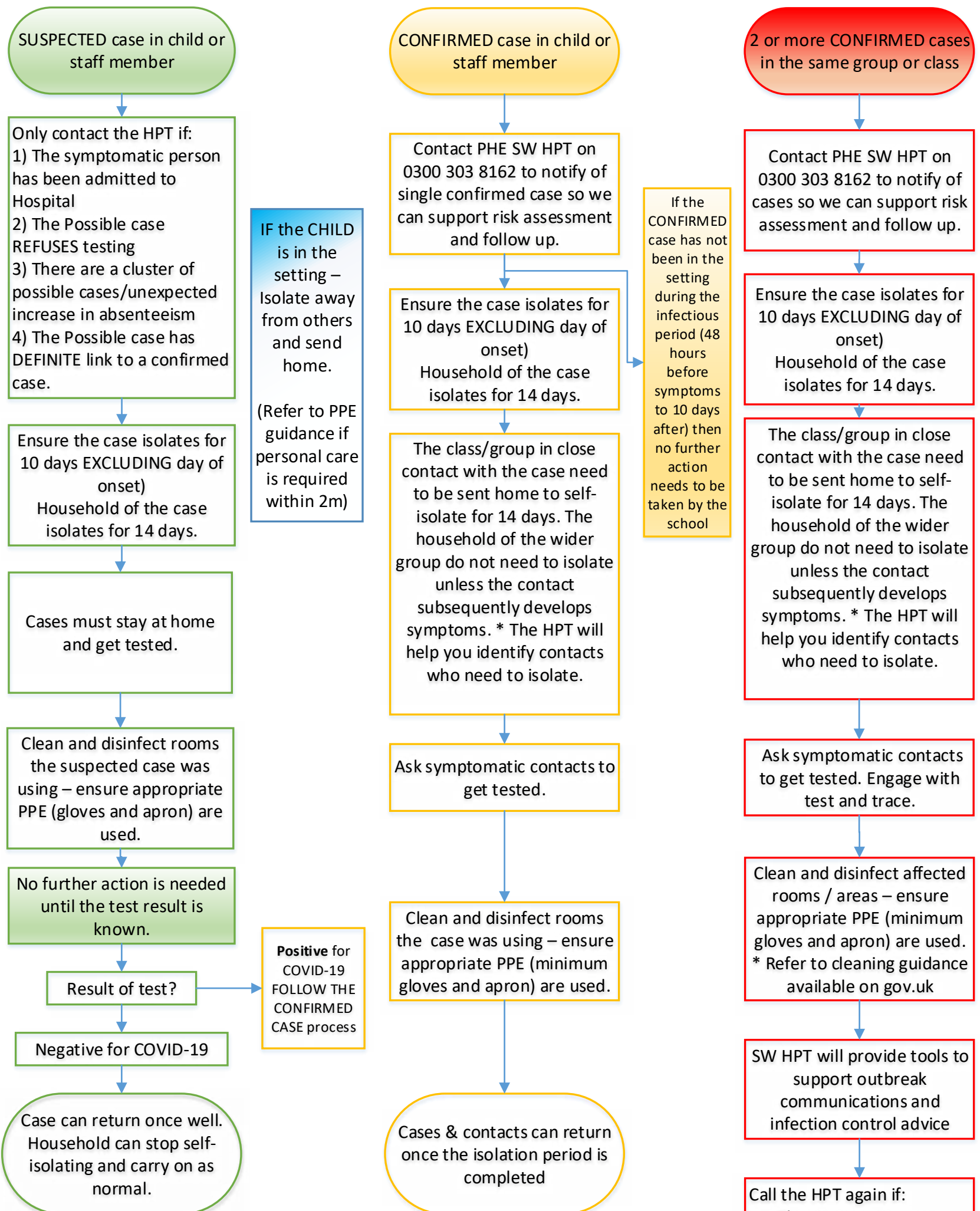


Prevent the spread of infection by maintaining high standards of hygiene, including hand washing and regular cleaning and disinfection of surfaces. This will help prevent COVID-19, as well as other infectious diseases, spreading in schools.
 If you have any infection control concerns or questions please call the South West Health Protection Team on 0300 303 8162. If the matter is not urgent you can also email swhpt@phe.gov.uk.
 GUIDANCE: Visit gov.uk/coronavirus for detailed schools guidance and other guidance
 TESTING: Visit nhs.uk/ask-for-a-coronavirus-test or call 119.



COVID-19 Case Definition: (as of 18/05/20)

- A high temperature
- A new, continuous cough
- A loss of, or change to, your sense of smell or taste

INFECTIOUS PERIOD:
 48 hours before the onset of symptoms to 10 days after onset.
 IF case has no symptoms but a positive test, it is 48 hours prior to test

Cleaning:
 For detailed guidance refer to the guidance on gov.uk:

Routine measures during COVID-19 pandemic should already be to outbreak standard.

PPE should be worn for cleaning – minimum gloves and disposable apron. Consider using face mask and eye protection if risk is high – ie. Cleaning areas where there are visible bodily fluids.

Public areas (e.g. corridors – clean as normal)

Surfaces that could be contaminated need cleaning and disinfection.

All frequently touched surfaces (door handles, taps, table tops, keyboards etc.) should also be cleaned and disinfected.

Use disposable cloths or paper roll, disposable mop heads to clean hard surfaces (e.g. floors, sanitary fittings, chairs, tables)

Use a combined detergent and disinfectant or use a two-stage cleaning process of detergent (household type cleaner) followed by a hypochlorite solution (1000ppm) e.g. diluted Milton. [Check chemicals in use are effective against enveloped viruses]

Avoid splashes and spray when cleaning where possible.

Waste: Any COVID-19 related waste should be double-bagged and stored for 72 hours before usual disposal.

If the CONFIRMED case has not been in the setting during the infectious period (48 hours before symptoms to 10 days after) then no further action needs to be taken by the school

IF the CHILD is in the setting –
 Isolate away from others and send home.
 (Refer to PPE guidance if personal care is required within 2m)

Positive for COVID-19
 FOLLOW THE CONFIRMED CASE process

